

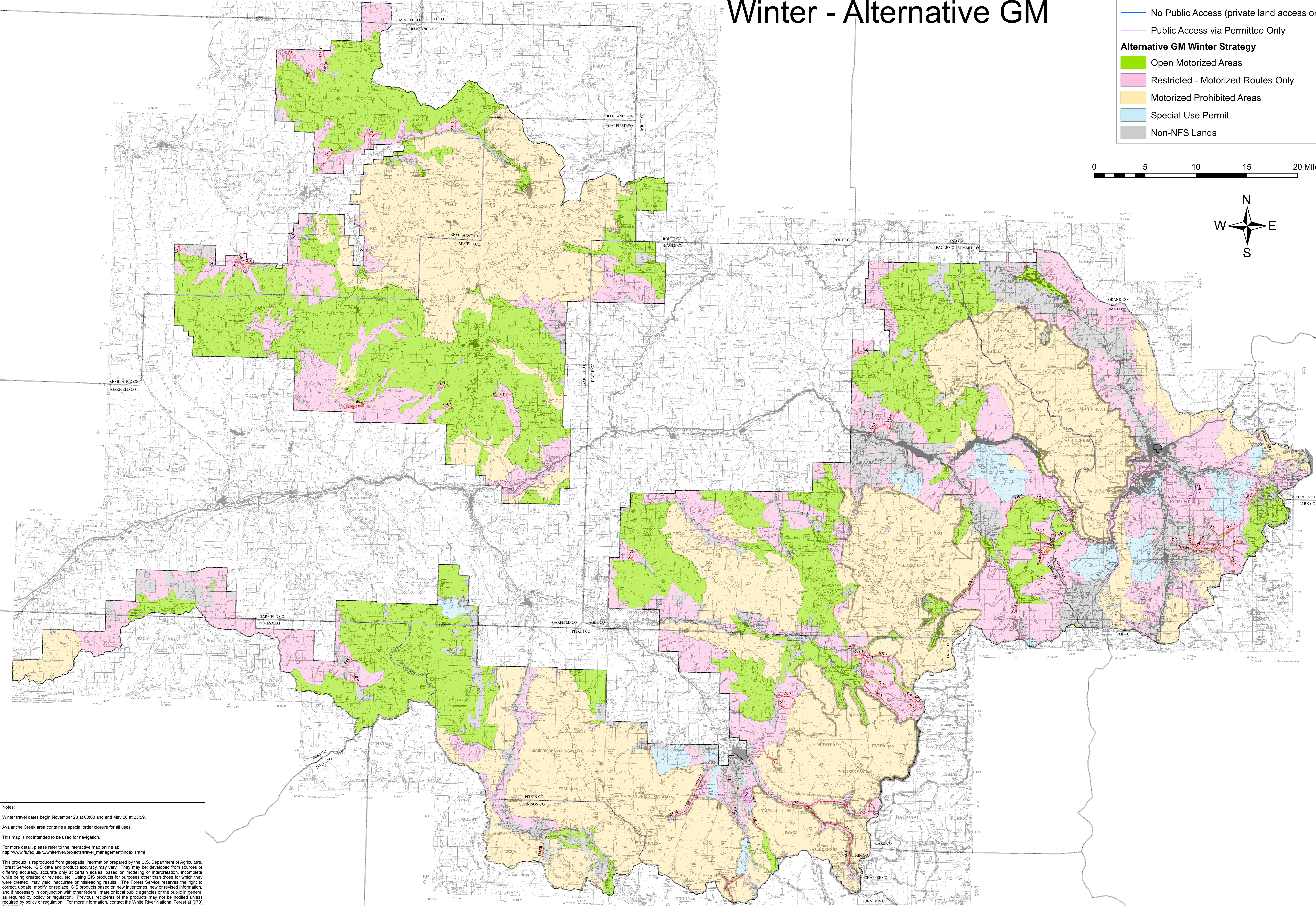
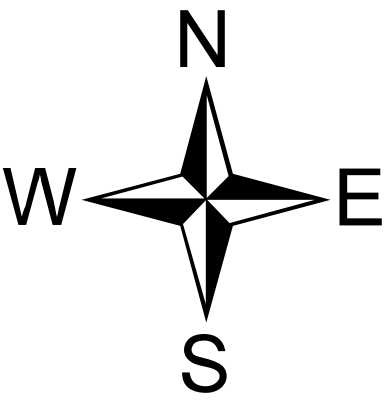
# White River National Forest

## Final Travel Management Plan

### Winter - Alternative GM

**Legend**

- Counties
- Forest Administrative Boundary
- Alt. GM Winter Motorized Routes**
  - Motorized Public Access
  - No Public Access (private land access only)
  - Public Access via Permittee Only
- Alternative GM Winter Strategy**
  - Open Motorized Areas
  - Restricted - Motorized Routes Only
  - Motorized Prohibited Areas
  - Special Use Permit
  - Non-NFS Lands



**Notes:**

Winter travel dates begin November 23 at 00:00 and end May 20 at 23:59.

Avalanche Creek area contains a special order closure for all uses.

This map is not intended to be used for navigation.

For more detail, please refer to the interactive map online at:  
[http://www.fs.fed.us/2/whiteriver/projects/travel\\_management/index.shtml](http://www.fs.fed.us/2/whiteriver/projects/travel_management/index.shtml)

This product is reproduced from geospatial information prepared by the U.S. Department of Agriculture, Forest Service. GIS data and product accuracy may vary. They may be developed from sources of differing accuracy, accurate only at certain scales, based on modeling or interpretation, incomplete while being created or revised, etc. Using GIS products for purposes other than those for which they were created, may yield inaccurate or misleading results. The Forest Service reserves the right to correct, update, modify, or replace, GIS products based on new inventories, new or revised information, and if necessary in conjunction with other federal, state or local public agencies or the public in general as required by policy or regulation. Previous recipients of the products may not be notified unless required by policy or regulation. For more information, contact the White River National Forest at (970) 945-2521.